

# CANS AND PSC RECORDED WEBINAR: CLINICAL UTILITY OF THE CYF MHOMS REPORTS



TRAINER: [Emily Velazquez Trask, Ph.D.](#)

Course Code: BHE0099

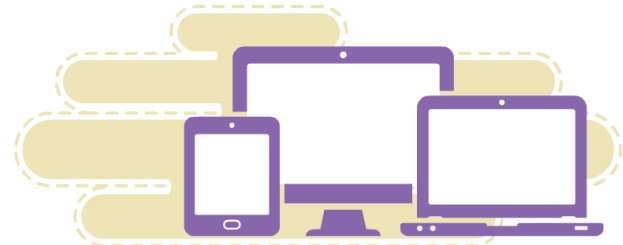
## Course Description

Provide an overview of the new Child and Adolescent Needs and Strengths (CANS) and Pediatric Symptom Checklist (PSC) graphs and reports available in CYF mHOMS. Discuss how to read the reports and use them clinically, both for program planning and to track individual participant progress.

Click here to see the [training outline](#).

## Audience

CYF-BHS counselors, case managers, therapists, supervisors, and other direct service providers utilizing the CANS assessment .



## Learning Objectives

Upon completion of this training participants will be able to:

- Utilize the CANS and PSC reports and graphs
- Explain the seven CANS reports and discuss how to interpret and use each one clinically
- Describe PSC graphs – individual and aggregated, including clinical utilization
- Explain how to find and use the new reports and graphs

[Click Here](#) to log into the LMS and Register

**Registration:** If you already have an account, you may search for the course by name or course code. If you do not have an account in the LMS you will need to open one by [clicking here](#). Email [RIHS@sdsu.edu](mailto:RIHS@sdsu.edu) if you have any questions. This training is FREE of charge to BHS County employees and contractors.

**Continuing Education:** This course meets the qualifications for 1 hours of continuing education credit for LMFTs, LCSWs, LPCCs, and/or LEPs as required by the California Board of Behavioral Sciences. The Academy for Professional Excellence is approved by the American Psychological Association to sponsor continuing education for psychologists and the California Association of Marriage and Family Therapists to sponsor continuing education for LMFTs, LCSWs, LPCCs and LEPs, Provider #91928. The Academy for Professional Excellence is approved by the California Board of Registered Nursing, Provider # BRN CEP15014; CCAPP-EI, Provider # 1S-98-398-0820, and CAADE Provider # CP10-906-CH0320 for 1 contact hours/CEHs. The Academy for Professional Excellence maintains responsibility for this program and its content. CE certificates will be available for download 5 business days after course completion. Click here for information on how to [obtain CE Certificates](#). Click here for the [CE Grievance Procedure](#).



Responsive Integrated Health Solutions (RIHS) is a County of San Diego Behavioral Health contracted program of the Academy for Professional Excellence, and a project of San Diego State University School of Social Work.

