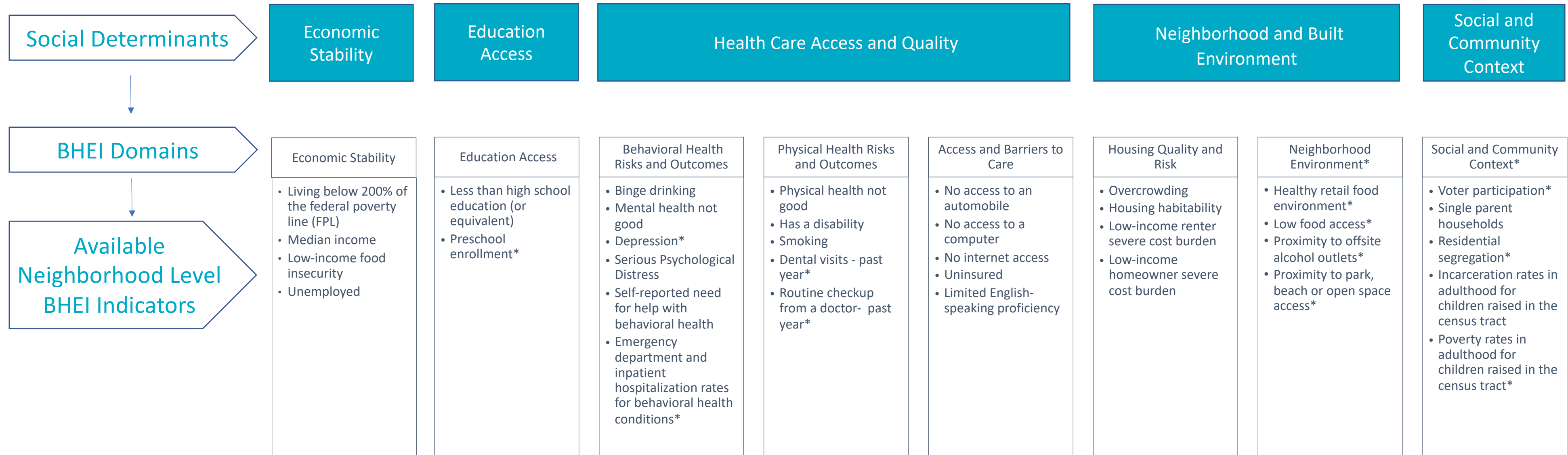


San Diego County Behavioral Health Equity Index (BHEI): Conceptual Model



*An asterisks indicates that the domain/indicator was added in response to feedback from the Community Experience Committee Workgroup.

NOTE: In the final BHEI tool, filters will allow users to focus on behavioral health equity among **special/priority populations**. Examples of these populations include veterans, active military, homeless, racial/ethnic minorities, individuals who are foreign born, have limited English-speaking ability, live in poverty, are from a high-risk age group, are Medicaid recipients, receive services from BHS, etc.

NOTE: In creating the final index, the indicator list may be revised slightly to improve the model.